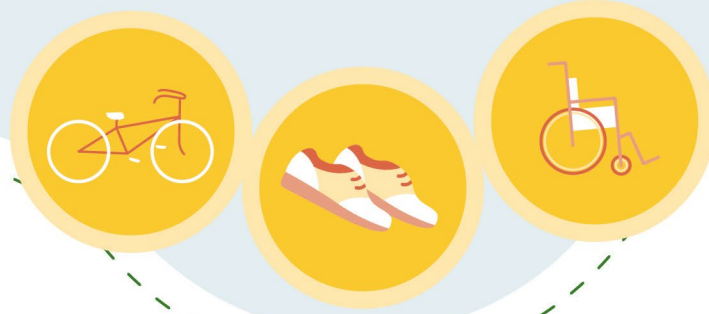


BIKE WALK ROLL WEEK



HANDS-UP SURVEY INFO SHEET

Hands-up Surveys are simple! Take 30 seconds to ask students.

“HOW DID YOU GET TO SCHOOL TODAY?”

STEP 1

Visit BikeWalkRoll.org

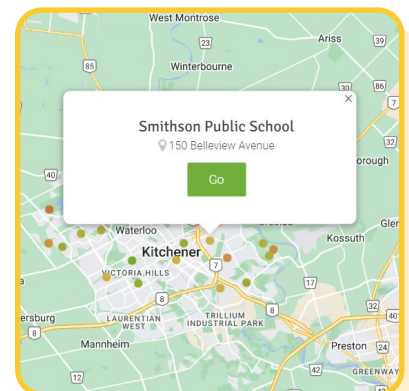
BikeWalkRoll.org is an easy and informative way to collect data on how students get to school. Create an account and try out the practice survey!

Try a Practice Survey

STEP 2

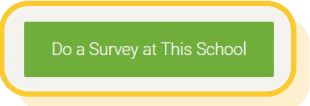
Find your school on the map

Once you've found your school, you can visit your school profile. This page shows nearby schools and any existing BikeWalkRoll scores. If you don't see your school, add it yourself or contact support@bikewalkroll.org to request for it to be added.



STEP 3







Do a hands-up survey



Do a Survey at This School

On your school profile, select the “**Do a Survey at this School**” button and you will be brought to the survey page.

This page shows the questions to ask the class:

- | | |
|----------------------------------------------------------------------------------------------------------------------|----------------------------------------------------------------------------------------------------------------------------|
|  Who biked to school today? |  Who rolled to school today? |
|  Who walked to school today? |  Who rode a school bus to school today? |
|  Who rode in a car to school today? |  Who took public transit to school today? |

Record the number of students that raised their hands for each option. Hit “submit”!

STEP 4

Check out your BikeWalkRoll score

After the survey, the program generates your BikeWalkRoll score! The higher the number, the more biking, walking, and rolling in your classroom/at your school.

STEP 5

Do it again the following day!

Hands-up surveys are most effective when they are done over the span of a week or longer, so we encourage you to keep going!

Need more help?

Explore the many resources provided on [BikeWalkRoll.org](https://www.bikewalkroll.org)! Check out the [Quick Start Guide for Teachers](#) and [Champion Tools Guide](#).

If you have more questions, please get in touch!

 support@bikewalkroll.org

 urgentsupport@bikewalkroll.org

 data@greencommunitiescanada.ca