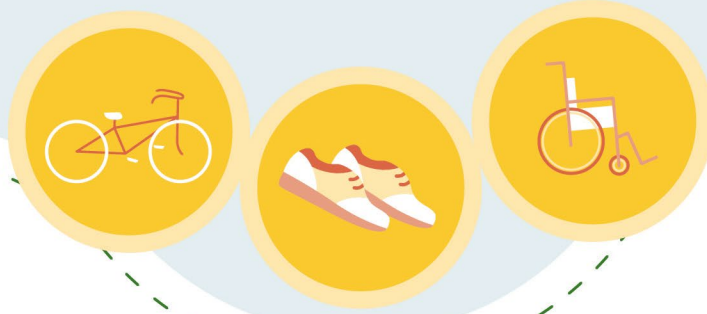


# BIKE WALK ROLL WEEK



## DATA COLLECTION INFO SHEET

---

There are many ways that school administrators, teachers, and parents can collect data about students' choice of travel to and from school. Here is a list of data collection methods that can be used to better understand current trends and barriers to school travel, infrastructure concerns, and more.

### STUDENT TRAVEL SURVEY

#### What is it?

Student Travel Surveys, also known as Hands-up Surveys, are a quick and easy way to collect data from students about how they travel to and from school.

#### Who can lead it?

Teachers, School Boards, Principals, and even Students!

#### How can it be done?

Everyday, for one week, ask students 'how did you get to school today?' during class. Count the number of students under each category (walking, biking, taking the bus, car). Once completed, input the results into [BikeWalkRoll.org](http://BikeWalkRoll.org).

# FAMILY TRAVEL SURVEY

## What is it?

Family Travel Surveys are used to ask parents and caregivers about the factors that influence their child(ren)'s mode of travel to and from school.

## Who can lead it?

Municipalities, School Boards, Principals, and Teachers.

## How can it be done?

The municipality or school creates a set of questions for parents and caregivers to answer regarding their child(ren)'s choice of travel to and from school. These surveys can be sent to parents and caregivers via paper or email.

# TRAFFIC COUNT

## What is it?

Traffic Counts are used to monitor the types of traffic in a neighbourhood and the number of individuals using each form of transportation.

## Who can lead it?

Municipalities, School Boards, Principals, Teachers, and even Students!

## How can it be done?

During peak school traffic times, find a spot nearby the school that receives high volumes of traffic. Set an amount of time to count the types of traffic (car, bus, bike, pedestrian) that you see arriving to, leaving from, or passing the school. Reach out to your municipality before considering this data collection.

# TRAFFIC OBSERVATION

## What is it?

Traffic observations are used to understand the flow and characteristics of school traffic, identify areas of concern, and pinpoint unsafe behaviours.

## Who can lead it?

Municipalities, School Boards, Principals, Teachers, Parents, Community Members, and even Students!

## How can it be done?

During peak school traffic times, find a spot nearby the school that receives high volumes of traffic. Set an amount of time to note down certain behaviours and infrastructure that facilitate or act as a barrier to active travel to school.

# SCHOOL SITE AUDIT

## What is it?

School Site Audits are used to identify features and areas of the school site that have poor accessibility, require maintenance, or are unsafe.

## Who can lead it?

School Boards and Principals.

## How can it be done?

Set aside a time to walk around the school area and examine its various features. During this process, take detailed notes about the quality and condition of the school site features, and how they are being used by students and staff. This data is a helpful tool for future decisions about the school layout, and developing maintenance and management plans.

# STEPS CHALLENGE

## What is it?

The Steps Challenge is a fun way to encourage students and teachers to increase their rates of walking to school.

## Who can lead it?

Teachers, Parents, and even Students!

## How can it be done?

Set aside an amount of time (e.g. 1-2 weeks) for students and staff to track the number of steps they take when walking to and from school. This can be done using a pedometer, or a step counting app on a smartphone (e.g., [the Hop! app](#)). Each morning, record the number of steps taken the day before. By the end of the challenge, see which student/classroom walked the most steps. Consider rewarding the winning student/classroom with a fun prize (e.g. a Golden Shoe award, stickers, pizza party, etc.).

## Want to learn more?

For additional information on each data collection method, and for more ways to encourage active school travel, visit the [Ideas Lab](#) on [SchoolTravel.ca](#).

**If you have more questions, please get in touch!**



[data@greencommunitiescanada.ca](mailto:data@greencommunitiescanada.ca)