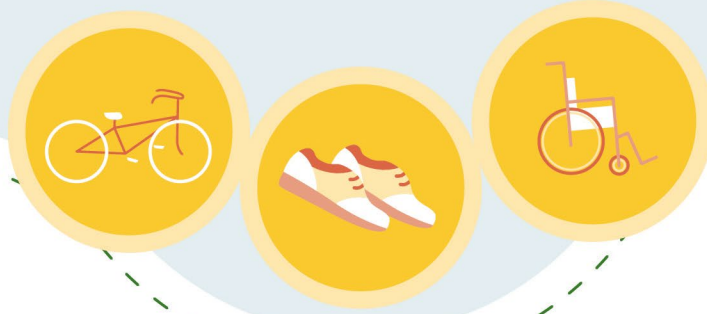


BIKE WALK ROLL WEEK



BIKEWALKROLL FAQ

What is BikeWalkRoll.org?

[BikeWalkRoll.org](https://www.bikewalkroll.org) is an online tool that schools and organizations use to collect data about how students travel to and from school.

What personal information is collected?

To create an account, the only information needed is your name and email address. To complete the hands-up survey, the tool requires your school's name, the grade of your class, and the number of students that have walked, wheeled, bussed, or taken a car to school. [BikeWalkRoll.org](https://www.bikewalkroll.org) does not ask for any information beyond that.

Who owns and manages the tool?

The online tool was created by Green Action Centre, an environmental non-profit, and the Heart & Stroke Foundation, a national health organization.

The website is currently owned by Green Action Centre, and is managed by Anders Swanson, director of the project.

Who can access the data?

The data collected on [BikeWalkRoll.org](https://www.bikewalkroll.org) is open source, therefore it is accessible to anybody and everybody wanting to better understand student travel patterns!

Why open source?

[BikeWalkRoll.org](https://www.bikewalkroll.org) has the mission to make their data easily accessible for anybody to use and learn from, which is only possible when the data is open source. In addition, this method provides all schools with a centralized method of collecting data, and builds a comprehensive understanding of transportation trends across the country. This gives classrooms/schools the opportunity to compare their statistics to a classroom or school in another city, province, or even country!

Why should schools share their data on BikeWalkRoll.org?

There are many reasons that we encourage schools to share their data on [BikeWalkRoll.org](https://www.bikewalkroll.org). Some reasons include:

- **Encouraging citizen science:** As more schools share their data, we are able to analyze certain infrastructure needs and gaps in active transportation across regions, provinces, and countries. This data will allow us to better understand how to address these gaps to improve rates of active transportation.
- **Providing real-time results:** Rather than completing a survey, and waiting for results to be amalgamated and analyzed, [BikeWalkRoll.org](https://www.bikewalkroll.org) allows school administration, teachers, and organizations to view their results and compare their score immediately!
- **Ease of use:** Some data collection surveys and analysis processes are complex, and difficult to use and interpret. [BikeWalkRoll.org](https://www.bikewalkroll.org) is quick, easy, accurate, and fun to use!

Still unsure about using BikeWalkRoll.org?

If you'd like to learn more, explore the many resources provided on [BikeWalkRoll.org](https://www.bikewalkroll.org), such as [FAQ and Troubleshooting](#) and the [Overview of Data Collection and Management](#).

If you have more questions, please get in touch!



support@bikewalkroll.org



urgentsupport@bikewalkroll.org



data@greencommunitiescanada.ca